



List-less modems

Even if it's not on the list, you can still get your modem to work with DOIP. Terence Green explains how.

I promised, last month, to write about how to get Warp and Windows networking with TCP/IP — I don't know why I make these extravagant promises but I do hope to be able to cover this in next month's column.

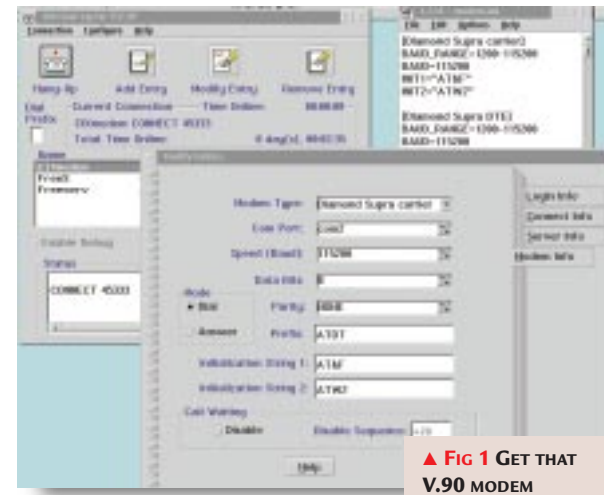
Also in last month's column, writing about using new modems which Dial Other Internet Provider doesn't appear to support, I professed ignorance as to how to update the now-ancient DOIP modem list. Bear in mind, as I wrote then, that you really don't need to do this. Your modem will work with OS/2. Pick any modem — for example, 'Hayes Generic' or 'Other' — from the list and edit the Initialisation strings on the DOIP modem page to suit:

AT&F

always works.

But it's naturally a worry when your modem isn't listed. Reader Michael Talbot says his ISP has just upgraded to V.90 and he wonders whether to flash-upgrade his Hayes modem. Hayes provides drivers, as Michael notes, but they are 'of course for W95/98, so it's unclear as an OS/2 user

You don't need to do this. Your modem will work with OS/2



▲ FIG 1 GET THAT V.90 MODEM WORKING WITH DIAL OTHER INTERNET PROVIDER

whether I will gain any advantage from upgrading,' writes Michael.

Well, Michael, you will. My Diamond V.90 and Psion GoldCard V.90 modems work a treat in Warp [Fig 1]. The lack of OS/2 drivers is

completely irrelevant. It creates a perception that the modem won't

work with OS/2 but nothing could be further from the truth.

Windows drivers? All they do is to automate the process of updating a few text entries in the registry through a flashy interface with dancing folders.

There are cases, though, when you might want to have your modem in the DOIP list and, as I've now discovered, a simple edit of a text file does the business.

My Diamond SupraExpress modem by default reports computer-to-modem (DTE) speed. It needs the 'W2' command in

order to report the actual connect (DCE) speed, so I edited the MODEM.IAK file. This file can be edited with any text editor and the format of modem entries is obvious.

Finding the right file is less obvious. OS/2 sports four MODEM.* files! But MODEM.IAK in X:\MPTN\ETC (where X: is your OS/2 boot drive) is the one you want.

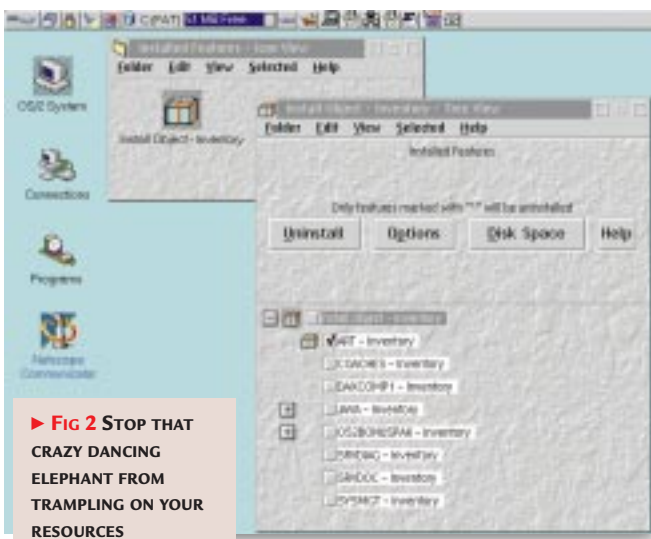
Use your modem manufacturer's manual or online documentation to find out whether a special AT command string is required and simply add your modem to the top of the list following the format of the other entries. Now, when you add or edit an entry in DOIP you can select your modem from the list. it turns up in alphabetical order even though you added it at the top of MODEM.IAK. The MODEM.LST in that same subdirectory is used by the IBM Global Network Dialer, IBM's ISP, and has nothing to do with DOIP.

In case you come across them, the other pair of MODEM.* files, are in X:\TCP\IP\SAMPLES\ETC. They're copies of the originals and are not used by DOIP.

■ Problems, problems...

CD-ROM problems are a continuing source of frustration for readers and I do not always have good answers to intractable problems such as those troubling reader, Nigel Brown. His CD works, but not all the time. Worse still, it works fine with Windows and Linux but not with Warp 3 or Warp 4.

Nigel has a 486 with a Mitsumi FX400 CD-ROM attached to the secondary IDE channel. With some CDs the PC freezes and can only be rescued with the reset button. This doesn't happen with all CDs but with those it does affect, the problem is repeatable.



► FIG 2 STOP THAT CRAZY DANCING ELEPHANT FROM TRAMPLING ON YOUR RESOURCES

My first port of call with a CD-ROM problem is always the OS/2 Device Driver Pak Online at <http://service.software.ibm.com/os2ddpak> but the Mitsumi entry here says that the drive is supported in Warp 3 and Warp 4.

• *If any reader recognises this problem please write in. Nigel also wants to know how to start Warp with Num Lock on. I am sure there is an easy answer to this but it is not known to me. Help!*

■ Crash repair

Andy Pengelly discovered the reason his PC was thrashing the disk and sometimes crashing for lack of resources. The errant process turned out to be C:\OS2\ART\ARTCHRON.EXE which Andy reckons is part of the IBM software registration facility.

Indeed it is and it's a real nuisance if you don't know how to get rid of it. You can kill it by renaming ARTCHRON.EXE but it's best to disable it 'officially' [Fig 2]. Open the Drives folder (found in the 'OS/2 System' folder) and from there open the \OS2\INSTALL folder from your OS/2 boot drive. You should see the icon for 'Installed Object - Feature'. Double-click on this to open it, place a checkmark in the ART - Inventory box, and select Uninstall. Follow the instructions and, voilà!

■ Trouble with debugger

Reader Cecil Wallis never fails to amaze me. He has been digging into Java. Everything worked until he ran the debugger, at which point things went awry because the debugger could not find localhost.

He tried everything and eventually gave up and decided to set up XFree86. There, in the documentation FAQ he

LOST AND FOUND

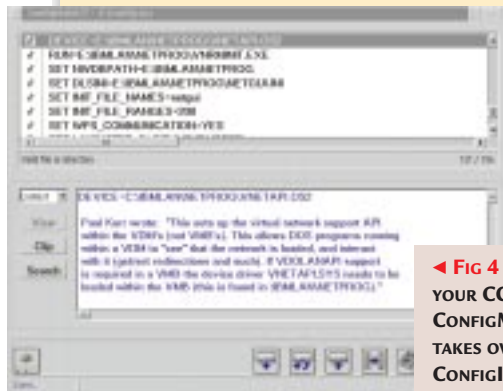
Readers have had difficulty finding some of the programs mentioned in past issues. My apologies for this as there have since been some changes.

- **ZTreeBold** – Dave Phillips couldn't find ZTreeBold at the URL given. It turns out that they've moved to www.ztree.com [Fig 3]. Hope it's still there by the time this appears!
- **ConfigInfo** – Martin McDowell gave the URL for the ConfigInfo utility to a friend but it had vanished by the time he looked it up. It turns



▲ **FIG 3 FOUND AGAIN!** ZTREEBOLD, THE TEXT-MODE FILE UTILITY THAT LOOKS LIKE XTREEGOLD

out that the original author of ConfigInfo has ceased updating it but a new utility called ConfigMaint/2 [Fig 4] has risen



◀ **FIG 4 FOR EDITING YOUR CONFIG.SYS, CONFIGMAINT/2 TAKES OVER WHERE CONFIGINFO LEFT OFF**

from its ashes. It can be found at www.buntspecht.de/cfgmaint/ along with an explanation as to how it came about.

found the line: 'Be sure that the line in \tcpip\etc\hosts ends with a newline'. So, problem solved – and, as Cecil says: 'Those who can afford a dedicated server will be muttering "DNS". But as for the rest of us...'

He then checked the Java docs and found this: 'A line is considered to be terminated by any one of a line feed (\n), a carriage return (\r), or a carriage return followed immediately by a

linefeed'. So, if you are using the HOST file rather than a DNS server for TCP/IP configuration and having problems, you should check for that newline. Cecil reckons that he 'should have known – RTFM... but which manual?'

➔ **As an aside**, if you want access to more accumulated knowledge on OS/2 than you ever imagined could exist, IBM has put the Red Books online at www.software.ibm.com/os/warp/library/redindex.html. Unfortunately I couldn't find a way to S(ave)TFM!

■ Star Office

Several readers have expressed interest in Star Office. Charles Stirling wrote in to suggest a workaround for the registration issue: we could put the software on the CD and readers could register without needing to download. It's a workable plan but it wouldn't meet with the licence conditions so we're going down the legit path. Star Division is ready to give us a version for our cover CD so we'll grab it as soon as space permits.

PCW CONTACTS

Terence Green welcomes your feedback on the OS/2 column. Contact him via the PCW editorial office (address, p14) or email os2@pcw.co.uk

WARP 3 FIXPACK#40

You've probably noticed that there has been an absence of Fix Packs for some while now. My apologies for this but there has been a recent push from the top to include lots of packages on our cover CD – for instance all those ISP sign-up packages that

Windows users need – and there has been no room for us. The good news is that we've managed to squeeze a Fix Pack onto this issue's cover CD. As it has been a while since we carried a Fix Pack and the last one was for Warp 4, you'll find Warp 3 Fix Pak#40 on the disc.



Do it with the dialer

Comfort for Warp users frustrated by Microsoft: your trusty DOIP can do it. Terence Green on ISPs and modems.

I was mildly amused to read in the coverage of the Microsoft vs DoJ (US Dept of Justice) battle that Bill Gates had complained, by email, of the problems caused to Microsoft arising from rampant virtual device drivers. This email exchange with senior vice-president Paul Maritz discussed how to stop Intel from shipping software that would compete with a Windows component. Gates says Microsoft doesn't want another problem like the VxD one. Warp users, all too familiar with the use of VxDs to lock out Warp, should have no difficulty spotting the irony in this.

It was not headline news when Warp was being sidelined but Microsoft's habit of making small software changes to inhibit competitors hit headline news recently. Documents were published in which a Microsoft employee suggested making proprietary changes to internet protocols in order to combat the open source movement currently riding the Linux wave.

This touched a nerve because I've been trying to dump NETBEUI and run an all-TCP/IP network but I've been hitting detail problems which prevent Warp from easily connecting to Windows in the absence of NETBEUI. Nevertheless, it looks as if it can be done and I hope to explain how in next month's column.

The practical effect of Microsoft's tweaks becomes apparent if you're running OS/2 in an organisation which moves over to Windows networking. Warp has excellent networking but your organisation will probably make you drop Warp as 'it doesn't network with Windows'. This isn't true, but tracking down the details has not proved easy.

■ **ISP for free**

Freemove, the free ISP from Dixon's, is another area in which you don't need Windows, although they say you do. Ostensibly, you need Microsoft Internet

Explorer 4 to sign up, after which you can use any browser. But you can easily sign up and use Freemove with Warp's Dial Other Internet Provider dialer [Fig 1] and an OS/2 web browser.

I came across the clue to this on the UK OS/2 User Group mailing list. If you want to find out what the OS/2 UG has been up to lately, their new web page is at www.warp.in-uk.net [Fig 2].

➔ **To register an account on Freemove** you must access the Sign-up page [Fig 3]. So, fire up your trusty DOIP, select 'Add Entry' and fill in only the details below — any more is superfluous. You don't even need 'Your Domain Name' although DOIP won't save the entry if you leave it blank.

- On page one. 'Login Info':
Login ID freemovesignup
Password signup
Phone Number 08450796699
Connection type PPP
- On page two. 'Connect info':
Domain Nameserver 194.152.64.68
Your Domain Name freemove.co.uk
- Leave page three (Server info) blank, and on page four, fill in your modem details.
- Save the new entry and hit the Dial button to connect. Use Netscape Communicator or Web Explorer to open the sign-up page at <https://signup.freemove.net/> and follow the registration procedure.

If you have a problem accessing the sign-up page, double-check that you have entered the URL correctly. It's a secure connection, hence 'https' rather than 'http'. You won't be allowed to load any page other than the sign-up page — you'll see a DNS failure.

Once you have completed the registration process you are offered the option to 'Finish'. This applies to Windows users. When you select Finish, Freemove sends a Windows



▲ **FIG 1 USE DIAL OTHER INTERNET PROVIDER TO GET ONLINE WITH FREEMOVE**

configuration file down to your computer. Save the file if you like. It's text and can't do OS/2 any harm but note that it lists your details, including your password, in clear text.

After you hang up you must edit the DOIP entry to replace the sign-up Login ID and password with your new Freemove user name and password. You have to be careful here. Your Login ID is the fully-qualified Freemove host name. If you were to choose, say, 'dogbert@coolcat.freemove.co.uk' as your Freemove user name, your Login ID would be 'coolcat.freemove.co.uk'. You also need to use the full user name when you set up email [Fig 4].

▼ **FIG 2 THE OS/2 USER GROUP AT ITS NEW WEB SITE**



A TOP TIP FOR DOIP AND V.90 MODEMS

Reader Chris Potts wants to buy a new modem but wonders whether it would work with Dial Other Internet Provider, which by now has an outdated modem list. He also wanted to know if there was any difference between internal and external modems.

Almost any modem other than a Winmodem will work with DOIP. Winmodems have to run software on Windows so they're useless for Warp. If you have an external modem simply attach it to COM1 or COM2 and away you go.

If you have an internal modem you'll most likely set it as COM3 so as not to clash with the existing COM1 and COM2 serial ports on the PC. This involves a bit of extra work as you probably want to retain the use of COM1 (for a mouse, say). You must change the default IRQ and I/O Port settings for COM3 to prevent a conflict with COM1 which uses IRQ4 and Port 3F8.

When you set up your internal modem as COM3, make sure it is set to something like IRQ5 and I/O Port 3E8.

You will also find that DOIP knows nothing of COM3 because OS/2 by default only sets up COM1 and COM2. Add support for COM3 by adding a line to the CONFIG.SYS. Here's how to do it:

- Find the line in CONFIG.SYS which reads `device = x:\os2\boot\com.sys` (where 'x' = the OS/2 boot drive).

Now edit it to read `device = x:\os2\boot\com.sys (3,3E8,5)` This tells OS/2 that COM3 is on I/O Port 3E8 and IRQ5.

You won't find a recent modem in the DOIP modem list, and I don't know how to update it, but that's not a problem. Simply use the generic Hayes entry.

You may need to edit the Dialing strings if the modem doesn't connect properly. Start by changing it to a simple AT&F which sets the modem back to its factory configuration. If you want to tinker further you'll need to look up the AT commands in the modem's handbook.

For example, if you use Netscape you would normally use 'coolcat' as your user name but you need to enter 'coolcat.freemove.co.uk' as your Mail Server User name under Mail Server in the Preferences dialogue.

The Incoming Mail Server name is 'pop.freemove.net'. When you open Messenger and 'Get Msg' the dialogue that asks for your password should read 'coolcat.freemove.co.uk@pop.freemove.net'. The other servers are straightforward. The outgoing mail server is sntp.freemove.net and the news server is news.freemove.net. If you want to use the proxy server it is www-cache.freemove.net.

■ Warp can't see my CD!

Reader Carl Robson has asked me whether it is necessary to install Fix Packs

in sequential order. The answer is no. They are cumulative and you need only the latest to pick up all fixes to date.

Carl also wanted to know whether it was possible to create the Fix Pack

floppy diskettes on a Windows system because his CD-ROM drive isn't recognised by Warp 3. This cannot be done because the program which creates the floppies from the Fix Pack images is an OS/2 program.

There is a solution to the CD-ROM recognition

◀ **FIG 4** YOU CAN USE NETSCAPE MESSENGER TO COLLECT EMAIL FROM FREEMOVE



problem, though. Download IDEASD.EXE from the 'IDE-ATAPI CD-ROM Support' link on the OS/2 Device

Driver Pak On-Line at service.software.ibm.com/os2ddpak/html/miscellb/os_2warp/index.htm.

Extract the files into a temporary directory or onto a diskette by running IDEASD.EXE and follow the instructions to update an existing

installation. You can also update a set of Warp installation diskettes if you have not yet installed it. This update applies to all versions of Warp.

Carl offered up the URL for 'The 13th Floor', a site which links OS/2 applications against the equivalent Windows item. This useful site includes shareware and freeware as well as commercial applications. He noted that it offered a way to network Warp 3 with Dial Other Internet Provider and a network card. The site is at www.tstonramp.com/~freiheit/os2apps.shtm.

PCW CONTACTS

Terence Green can be contacted via the PCW editorial office (address, p14) or email os2@pcw.co.uk

◀ **FIG 3** USING NETSCAPE COMMUNICATOR 4.04 FOR OS/2 TO SIGN UP WITH FREEMOVE





Star quality

The latest version of Star Office suite **looks good** — Terence Green downloads the free version.

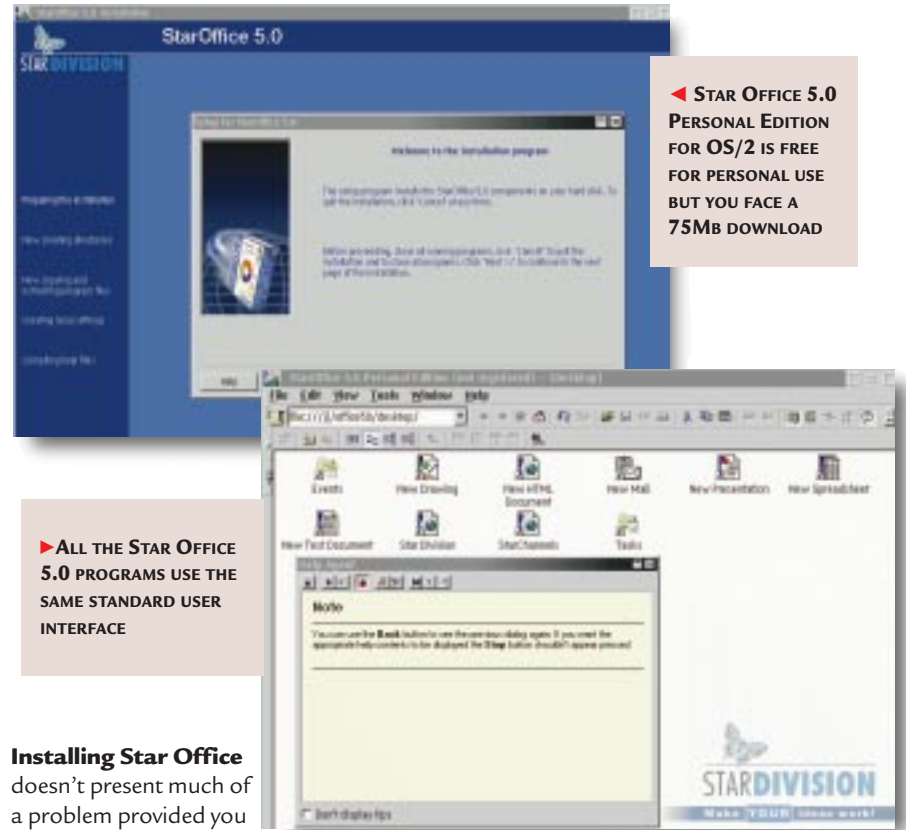
Ironic, isn't it? We waited something like four years for Lotus SmartSuite for OS/2 Warp 4 to appear and, within months of its release, Star Division launches an OS/2 office suite which is free for personal, non-commercial use! Star Office has been around for several years but has been refined into its present, rather sophisticated, state in version 5.0. I briefly looked at version 3 a couple of years ago and found it to be a bit clumsy, but reader Jean-Yves Rouffiac pointed me at version 5.0 and suggested that I place it on our cover CD, so I had another look.

The free version, Star Office 5.0 Personal Edition is available as a web download and it's 75Mb! It comprises a word processor, spreadsheet, graphics and presentation module, news and mail readers, an HTML editor and a few utilities. All the components feature a standard user interface. I've had a look at the suite and it would certainly be worth placing on our cover CD. But there's a catch. The download requires a registration procedure which involves an individual key derived from your email address without which the program cannot be installed. And, once installed, the program will only work for 30 days without being registered. This is free but the combination of the download procedure and the licence for the free edition means that it is not possible to put this product on our cover-mounted CD.

I've contacted Star Division to see if something can be worked out but in the meantime any readers who have a reliable and fast connection to the net might wish to have a look for themselves.

One of the download sites is the Sunsite at Imperial College in the UK. With a fast modem, say 56K, the file should take under eight hours to download. At weekend rates for a local call that would cost under £5 provided you get it all on the first attempt.

Star Office has been refined into its present, rather sophisticated state



◀ **STAR OFFICE 5.0 PERSONAL EDITION FOR OS/2 IS FREE FOR PERSONAL USE BUT YOU FACE A 75MB DOWNLOAD**

▶ **ALL THE STAR OFFICE 5.0 PROGRAMS USE THE SAME STANDARD USER INTERFACE**

Installing Star Office doesn't present much of a problem provided you can spare the space. The standard installation needs 130Mb of free space and the minimum install wants 60Mb. A copy of Java 1.1.6 is included in the distribution. If you have already installed Java 1.1.6, Star Office will automatically

configure itself to use that copy. If not, you can install the copy provided by Star Office after installing the main office suite and you don't have to have Java unless you want to use it in Star Office.

If you like the look of Star Office 5.0 you can upgrade to the full version for \$40 which includes a distribution CD and initial setup support. Printed documentation costs extra.

Documentation for the free download version is limited to an Adobe Acrobat file which you can find on the web, from the Star Division site, or you can get a hard copy via a mailing list.

A commercial single-user licence costs \$170 and from there you get into business pricing which also allows you to run it from a network file server. Star Office 5.0 (including the free Personal Edition) is available for OS/2, Windows, Linux, Solaris and the Macintosh and there is a pure Java commercial version.

• Talking of Lotus SmartSuite for OS/2, a maintenance Release 1.1 was available at the end of December. The main new features are Microsoft Word 97 and Excel 97 Import filters, additional Y2K support and Euro Support. More details from www.lotus.com/smartsuiteos2.

➔ **Aurora.** The web server in the next version of Warp Server, codenamed Aurora but officially to be known as 'OS/2 Warp Server for e-business', looks likely to be based on IBM's OS/2 port of the Apache web server. Aurora is set to ship in April and will include IBM's WebSphere Application Server. WebSphere is IBM's multi-platform web

TOP TIPS FOR OS/2

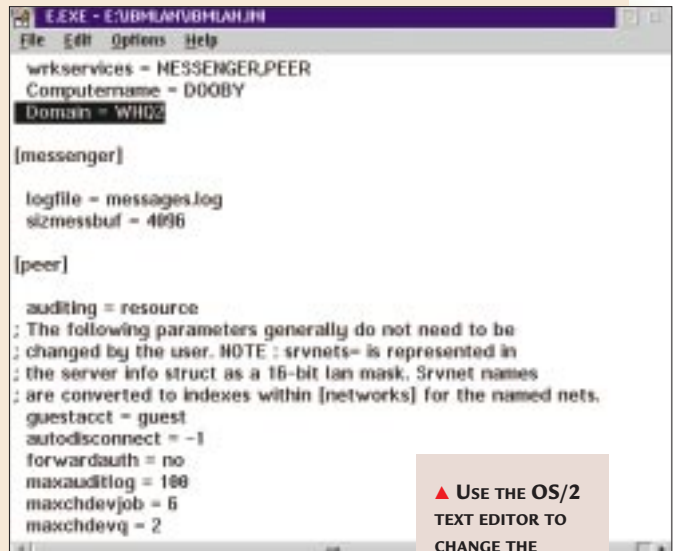
Reader Rupert Russell asked how to change the domain or workgroup name in OS/2 because he's replacing an old OS/2 server which will now be used in a different workgroup — it's easy to do with any text editor like Warp's E.EXE editor.

- Open the IBMLAN.INI file which is in the x:\IBMLAN subdirectory (where 'x' is the OS/2 boot drive) and look for the line 'DOMAIN ='. It is under the [requester] subhead but some way down the list just before the [messenger] subhead.
- Edit it to read 'DOMAIN = abcde' where 'abcde' is the name of the workgroup or domain.

If there are several workgroups or domains on your network and you would like the OS/2 network client to be able to see them as well, you can achieve this by editing another of the [requester] lines. Look for the 'othdomain' keyword which is near the top of the list and simply add the domains or workgroups separated by commas, as in 'othdomain = workgroup2, domain2, domain3' (see screenshot, right).

➔ **I'm no nearer** to discovering how to use REXX but you can learn more from 'REXX Tips & Tricks', and from an OS/2 INF file which can be found at hobbes.nmsu.edu/pub/os2/dev/rexx/ on the Hobbes OS/2 Archive. The file includes everything you need to get started with REXX.

➔ **If you have a laptop** computer or a desktop with PCMCIA card slots and you can't get it to see your PC cards as anything other than a memory card, try adding the following line to the beginning of the CONFIG.SYS file:
BASEDEV= RESERVE.SYS /mem:CA00,2000
 This resolves a problem where the PCMCIA driver loads over a ROM address and prevents the card's ID from being read. What the command does is to reserve memory for the card.



▲ **USE THE OS/2 TEXT EDITOR TO CHANGE THE WORKGROUP OR DOMAIN NAME OF AN OS/2 CLIENT PC**

If you are still having problems with PCMCIA cards, have a look at Dr. Martinus' OS/2 Notebook site at www.os2ss.com/users/drmartinus/Notebook.htm. In fact, if you're planning to buy a notebook for OS/2, you should make a point of consulting the good doctor. He has a long list of notebooks categorised by their suitability for running Warp.

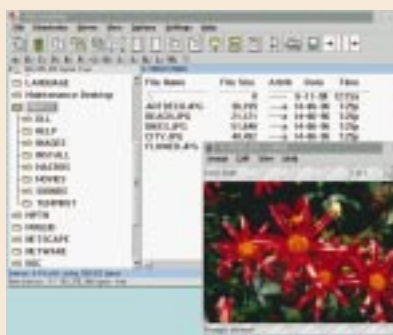
➔ **The IBM Technical Documents** database is another good resource if you're stuck on a Warp technical problem. You can search the database for new documents, or search by product at service5.boulder.ibm.com/pspdocs.nsf/.

➔ **Have a look** at the Jim Lewis OS/2 Web Page at chavet.com/jim.lewis/ for some nifty, free OS/2 programs including a CONFIG.SYS checker, some Java games and several file utilities.

FILE FREEDOM 2.01

Iam always on the look-out for OS/2 Warp file managers. My latest find is File Freedom 2.01 — a trifling 120Kb download. And, it's free. It's a feature-rich graphical file manager which is not too difficult to get to grips with. It supports file viewing, drag-and-drop file management and viewing, including those in zip files. It is really easy to install and you can add as many additional

viewing programs as you need. File Freedom 2.01 is the work of Bruce Henry and you can find it at Hobbes in hobbes.nmsu.edu/pub/os2/util/browser/filef201.zip or on his personal web site at www.kw.igs.net/~brhenry.



▲ **FILE FREEDOM 2.01 IS A FREE BUT FEATURE-RICH FILE MANAGEMENT TOOL FOR OS/2**

application and development server package. It's pure Java and supports Java Server Pages and Enterprise Java Beans. It runs on most Intel and UNIX platforms including Windows NT, Solaris, AIX, the AS/400 and IBM mainframes using Microsoft, Netscape, Apache and IBM web servers.

IBM says Aurora is its entry-level e-business server. This is slightly misleading though, as Aurora will fit snugly into any network environment, especially Windows and UNIX networks as it supports the UNIX Network File System and IBM/Microsoft SMB networking on which Windows networks are based.

PCW CONTACTS

Terence Green can be contacted via the PCW editorial office (address, p14) or email os2@pcw.co.uk



The theme of things

Terence Green explains why you won't find any **OS/2-specific reviews** in this column.

Lately, several people, including reader John Hines, have asked why this column doesn't cover more third-party OS/2 software and why there are no reviews of this software in the rest of PCW. I can't speak for the Editor as to the contents of the magazine, but it would be fair to say that there is a fairly small market for OS/2-specific software, and that could have a bearing on the matter. As far as this column is concerned, there simply isn't the space to review software and do it justice.

The primary remit of the *Hands On OS/2* column is handy hints and tips, which doesn't leave much room for reviews anyway. However, I will be trying hard to keep you up to date with what's new, and as most third-party developments these days are related to device support, I'll be trying to theme the columns. I'm considering covering subjects like scanning, backup, 56K and V.90 modems, email and multimedia support with a focus on new audio drivers, MPEG, MP3 and Windows TV. Any readers who can share their

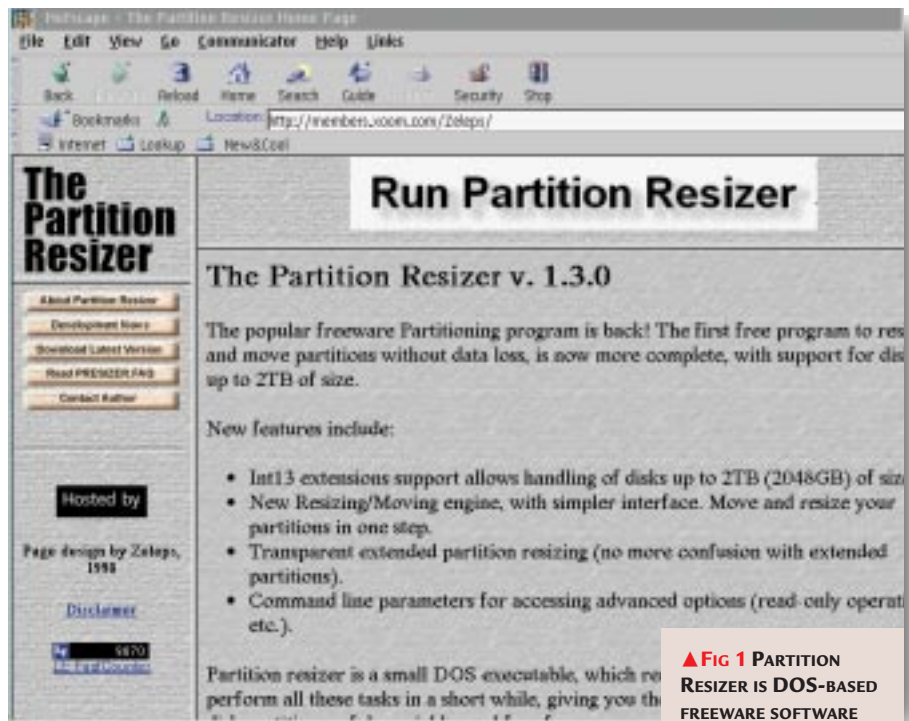
Aurora is designed to mesh with your NT application servers and to hook up your NT clients

knowledge of these subjects can drop me a line at the usual address (see the 'PCW Contacts' box, page 245).

➔ Spotlight on Aurora

Having said that we don't do reviews, allow me to contradict myself immediately with a short, potted review of OS/2 Warp Server for e-commerce, codenamed Aurora, the next version of Warp Server. The preview version came out in October and the real thing should be shipping by the time you read this.

Aurora is IBM's entry-level electronic business server, and since electronic business is a 24 x 7 application, its focus is



▲ **FIG 1** PARTITION RESIZER IS DOS-BASED FREEWARE SOFTWARE FOR RESIZING HARD-DISK PARTITIONS ON-THE-FLY

reliability. It has everything Warp Server 4.0 has, plus more integration for Windows and NT clients, and management for NT users from within Aurora. It also has a trial version of

the Lotus Go Webserver, and the WebSphere Application Server which adds Java and CORBA support to the Go Webserver.

Aurora has a lot more Java all round, in fact, because it has a simple proposition. You probably have some Windows NT servers and clients around but may not want to buy into the Microsoft everywhere approach, which ties you into buying more and more NT servers and developing web applications that are tied to Windows NT. Aurora is designed to mesh with your NT application servers and to hook up your NT clients, but instead of developing web applications using Microsoft's proprietary system, which only runs on Windows NT, you can develop them in Java which doesn't lock you into the Aurora server.

I'm only just beginning to play with

Aurora, so more details and screenshots will have to wait until next month. If you're currently running LAN Server or Warp Server, have a look at Aurora. Amongst other things it includes all the Warp Server Fixpacks and Year 2000 fixes you need to bring your older Warp Server systems up to date, and the hardware requirements haven't changed dramatically: a Pentium 133MHz or better with 32Mb RAM and 120Mb disk space is the absolute minimum, but 64Mb RAM and 500Mb disk space is recommended. Aurora supports symmetric multiprocessor systems out of the box.

➔ One-off partitioning

I frequently extol the wonders of Partition Magic because I use it a lot, having installed Warp and Windows operating systems more times than I've had hot dinners. But reader Andrew Aylett has found some freeware drive-partitioning software which he reckons is just the job

EACH TO HIS OWN C: DRIVE

Reader Cyril Bateman has written in to follow up on the advice I gave Esmond Poynton in the November '98 column. Esmond wanted to run Windows 98 and Warp on the same PC, alongside a CD-ROM and ZIP drive, and the problem was how to keep the drive letters of the removeable drives the same in each operating system. My suggestion was to modify the drive letter assignments in Windows 98 to match those in Warp.

Cyril suggested another option, which is equally valid. He runs Windows for Workgroups and Warp, together with a couple of Syquest external drives and a CD-ROM drive. The drive letters are constant for both OS/2 and Windows because he has given both operating systems their own C: drive which is managed by OS/2 Boot Manager.

In order to do this, you need to install (or have already installed) any version of Windows on the C: drive. Then you install Warp. But instead of putting it on a logical drive, you create a second primary drive for it, from FDISK. Since only one primary drive on a physical disk can be visible at any one time, the OS/2 and Windows partitions never see each other and you select which (I'm checking this) to start from Boot Manager.

Cyril keeps all common DOS and 16-bit Windows software on a logical drive D: which is accessible from both operating systems, and the Syquest drives are always E: and F:, with the CD-ROM as G:. This is a good solution, provided

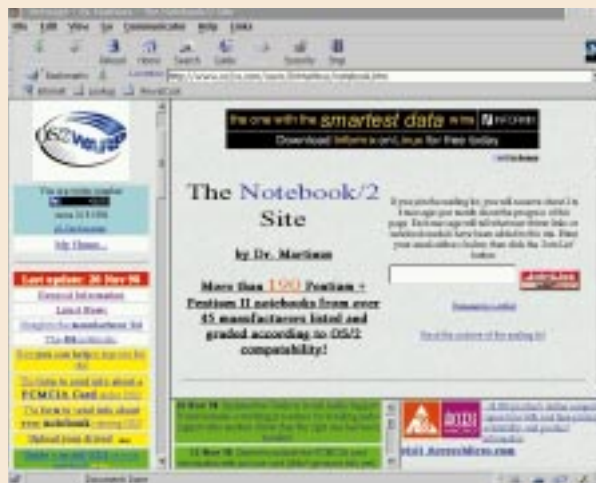
you don't at some stage want to run one of the FAT32 file systems for OS/2 which allow it to read FAT32-formatted drives. In this case, you need OS/2 to be installed on a logical partition so that it can see the Windows C: drive.

Cyril kindly included a couple of pointers to web sites which offer advice on coexistence scenarios for OS/2 Warp and Windows 95/98. They are at www.golden.net/~wfmnetcalf/Win95OS2.html and www.zeta.org.au/~jon/pharmacy/coexist.html.

Here's an interesting aside from Cyril, with reference to the communications software in OS/2 Warp which he has been running since 1994 on an HP Vectra 486/66 with slow, unbuffered serial chips. He tried internet access through Windows for Workgroups, had problems with performance, and then heard that OS/2 made better use of slow hardware. In Cyril's experience, internet permitting, he achieves transfers approaching 4,800bps with a Motorola 28.8 modem because OS/2 buffers the serial ports.

We beat this drum fairly frequently in this column because there are still many people out there running Windows 3.x who cannot upgrade to Windows 95 or Windows 98 without dramatically bumping up their system specification. However, you can still do a lot with Warp on hardware that Windows 98 deems insignificant. In Cyril's case, he runs all his communications and internet access over Warp on his 486 box.

DR MARTINUS' NOTEBOOK/2 SITE



EVERYTHING YOU ALWAYS WANTED TO KNOW BUT WEREN'T SURE WHERE TO LOOK. YOU CAN JOIN THE MAILING LIST AT www.os2ss.com/users/DRMARTINUS/NOTEBOOK.HTM TO KEEP UP WITH NEW DRIVER LINKS OR NOTEBOOK MODELS WHICH HAVE BEEN ADDED TO THE SITE

I haven't tried Partition Resizer myself and have no reason to doubt Andrew's recommendation, but I can't help feeling that for something as tricky as resizing partitions on-the-fly, there's more of a comfort zone in commercial software out there, being tested in the field and bitched about in the newsgroups.

Talking of which, the latest version 4.0 of Partition Magic no longer includes an OS/2 executable. When the news got out, it created a bit of a stir in the newsgroups and Powerquest said it would reconsider the decision. In the end, however, it did stick with its decision to drop the OS/2 executable.

for those of you who only ever need to use partitioning software once.

Partition Resizer, from Zeleps, will resize both FAT16 and FAT32 drives on-the-fly [Fig 1]. Andrew says he has tried it on both with no problems. The latest version can be found at <http://members.xoom.com/Zeleps>

(and yes, that is a capital Z — lower case doesn't work). Don't forget the cardinal rule for using this kind of software: that is, to always take a backup and save any valuable data before using any software that manipulates partitions.

PCW CONTACTS

Terence Green can be contacted via the PCW editorial office (address, p10) or email os2@pcw.co.uk



Back in business

The unfashionable **OS/2 Warp** title is thriving in the guise of Aurora. Terence Green reports.

As Aurora aka Warp Server 5 went into beta in October, IBM announced that it would be called OS/2 Warp Server for e-business. What a mouthful! IBM says it will be an entry-level e-business server. Good to see the OS/2 Warp name retained. IBM might have retired the OS/2 moniker for image reasons, but the company must have perused the figures for market share in IDC's June 1998 server report. NetWare was at 38 percent, Unix at 21 percent, Windows NT at 16 percent, and OS/2 at 11 percent. Nice to see our favourite "dead" operating system right up there with some of the more marketed products.

Turn on, Plug-in

The new OS/2 Warp version of the Netscape Communicator 4.04 browser is now on the cover CD, along with the OS/2 Plug-in Pack v2.1, thanks to the assistance of Dave Mounce of IBM Hursley. The Netscape file is only a little over 7Mb since it no longer contains a Java runtime. If you want Java support you need to install Java 1.1.4 or a later package such as Java 1.1.6 for OS/2 Warp, which can be found on the cover disc of the October '98 issue of *PCW*.

Netscape Communicator 4.04 is a multi-module suite comprising the Navigator web browser, Messenger email, Collabra news and discussion groups, and Composer HTML editor. Video set to 256 colours or more is essential; you can't use it with 16-colour video.

The Plug-in Pack adds some OS/2 audio and video plug-ins and also enables Windows 3.1 plug-ins such as RealPlayer to be used with Communicator 4.04, provided of course that you have Win-OS/2 support installed. If you have problems getting the plug-ins working, try running them as helper applications instead. Helper applications run in a separate session and are easier to set up. The site at <http://budgetweb.com/os2/plugins2.html> is a mine of information

► **NEWSGROUPS AND EMAIL ARE PART OF NETSCAPE COMMUNICATOR 4.04 FOR OS/2 WARP**

▼ **WITH THE OS/2 PLUG-IN PACK YOU CAN RUN STUFF LIKE REALPLAYER 5.0 WITH NETSCAPE FOR OS/2**



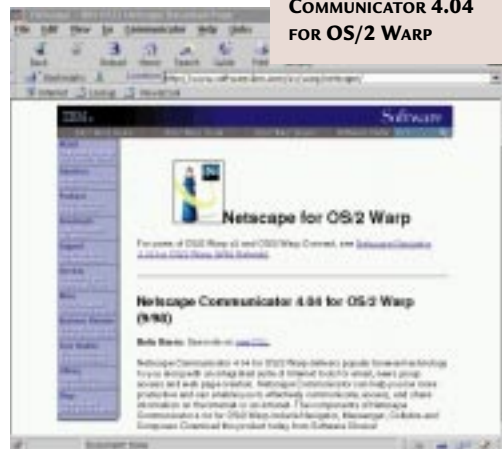
Technical Lead on the project, posted some additional information. Here it is. Use Times Roman MT 30 as your font for all encoding in order to view pages from any language. This only works for Chinese and Korean if Fix Pack #5 or later has been installed. You can have the Workplace Shell

on setting up plug-ins in Netscape for OS/2. Netscape Communicator 4.04 is officially supported on Warp 4, WorkSpace on Demand and Warp Server 4. Since Warp Server 4 actually has a Warp 3 base operating system, Fix Pack #32 or later is required. Fix Pack #35 is on the August issue cover CD. Although Communicator is not officially supported on Warp 3 and Warp Connect, it will work if you install Fix Pack #32 or later. Anyone who has to stick to the officially supported packages will need to download the newly refreshed Netscape Navigator 2.02 for OS/2.

launch helpers if you check the application radio button when editing (not creating) a helper, but leave the application entry field blank.

▼ **ON THE PCW COVER DISC: NETSCAPE COMMUNICATOR 4.04 FOR OS/2 WARP**

Shortly after Netscape Communicator 4.04 became available, Mike Kaply, IBM's



If images in the browser window are marred by horizontal white lines, read the instructions in the ReadMe file.

If the problem persists:

1 Create a REXX command file (it must have a .CMD extension but can have any name you like, for example REXX.CMD) containing the instructions shown below in Fig 1.

2 Save the file and run it.

3 If the problem remains, try changing the "2" to "1".

Mike Kaply goes on to mention some undocumented features of the browser, but there's one documented feature that didn't actually make the cut. Drag and Drop doesn't work — it's a priority of the next update. The undocumented features are entries you can easily add to the PREFS.JS file which you can find in the \NETSCAPE\USERS\USERNAME subdirectory, where "USERNAME" is the login name of your profile.

[FIG 1]

```
/* */
call RxFuncAdd "SysLoadFuncs",
"RexxUtil", "SysLoadFuncs"
call SysLoadFuncs
call SysIni "USER", "FixPak", "Shift", "2"
```

1 Communicator will load Arial web pages with a Helvetica font if you set the following preference to true: `user_pref("os2.arial_pref", false|true)`

2 To specify a wave file for new mail sound (you must use double backslashes): `user_pref("os2.mail.sound", "C:\MMOS2\SOUNDS\GOTMAIL.WAV")`

3 Prevent filename mangling when downloading by setting to false: `user_pref("os2.replace_dots", true|false)`

4 Turn off URL bar completion if set to false: `user_pref("os2.url_completion", true|false)`

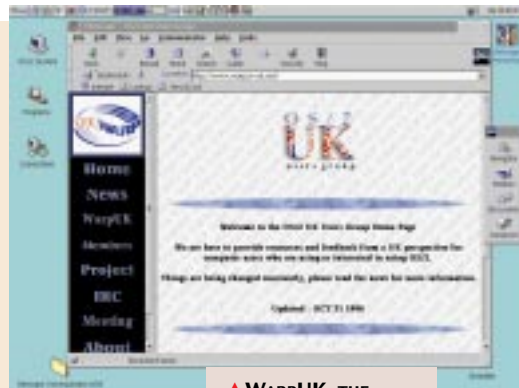
5 User Defined Encoding uses the default codepage of OS/2 if set to true. On Russian systems this allows you to see codepage 866 web pages. On default OS/2 systems you can see codepage 850 pages:

```
user_pref("os2.use_oem_charset", true|false)
```

WE'RE IN IT TOGETHER

Chris Lindley writes to say that following a successful planning meeting in September, a group of OS/2 users is planning a formal launch of WarpUK, a user group for UK OS/2 SoHo users and hobbyists, at a meeting in January 1999.

You can obtain more information from Sid Gale on sidg@btinternet.com or Chris Lindley on chris@scotgate2.demon.co.uk, or have a look at the web site at www.warp.in-uk.net.



▲ **WARPUK, THE OS/2 USER GROUP FOR SoHo USERS AND HOBBYISTS, WILL BE LAUNCHED IN JANUARY**

■ Electric blue

Nils Andreas Erstad wants to know whether OS/2 is "good for networking" and whether he can use the "blue edition" to connect a portable to his main computer. Nils doesn't say what's

running on his main computer, but it sounds like some version of Windows.

He also wants to know if a Toshiba 4400SX portable, a 25MHz 486 with 10Mb RAM, would be a way to run some 16-bit Windows programs.

First off, the "blue edition" sounds like Warp 3.0 with Win-OS/2 and that will indeed run 16-bit Windows programs in 10Mb if the Win-OS/2 support has been installed. It won't be happy with multiple Win-OS/2 sessions and lots of OS/2 applications, but it will be fine for average use.

If it's the "blue" Warp Connect or even Warp 4.0, then it will include networking and in this case 10Mb might be stretching it as networking takes up around 6Mb RAM. Together with the 4Mb RAM the base kernel needs, it adds up to 10Mb memory, and the number of applications you can load simultaneously will depend on how much swap space you can afford.

How easy it is to network the "blue edition" with another computer depends on the version of Warp. Warp 3.0 shipped in two different packages, one with a red spine, one blue. The "blue" version of Warp 3.0 is the one with

Windows built in, but it doesn't include any networking software other than the TCP/IP stuff in the Internet Access Kit in the Bonus Pack. The IAK TCP/IP stuff is for use over a modem and not easy to "fix" to use over a LAN.

Warp 3.0 Connect followed (in a blue package) and this does include LAN networking, in particular the OS/2 Peer software with which you can connect to other PCs running Warp Connect, and to Windows for Workgroups, Windows 95, Windows NT and so forth. Finally, Warp 4.0 (also blue) includes an improved version of the OS/2 Peer software. So, if you have Warp 3.0 Connect or Warp 4.0 then it's easy to network Warp and Windows. For a small home network the best bet is to use NETBIOS as the main protocol: it's fast, easy to set up, and browsing works from both sides — Warp and Windows.

If you want to have a go with TCP/IP networking, make sure to use the TCP/IP 3.0 software which you select as part of the network section of the install program, and not the TCP/IP 2.0 stuff that's in the IAK on the BonusPak. I've been lazy getting to grips with this because it makes my head hurt, but it's time I did. If you can't wait for me, John Summerfield's site at www.ami.com.au/os2/ and Jacco's OS/2 page at <http://carol.wins.uva.nl/~leeuw/os2.html> are good starting points.

PCW CONTACTS

Terence Green can be contacted by post at the PCW editorial office (address, p10) or email os2@pcw.co.uk



A night at the Opera

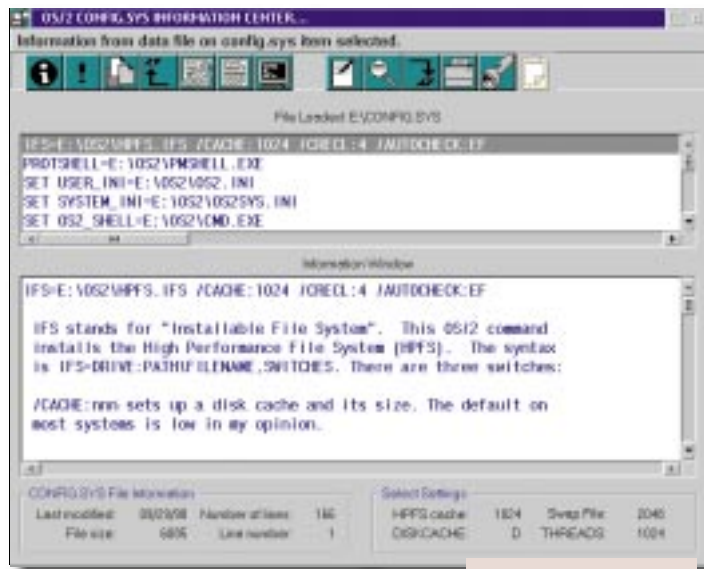
Terence Green catches up with developments in the browser world of Opera and WarpZilla.

The release of Netscape Communicator 4.04 for OS/2 Warp was imminent at the time I filed this month's column. If you can't wait, look for it at <http://service5.boulder.ibm.com/pcpd.nsf/OCOMM40+Home>. It should be good — the second beta of Communicator worked well. The finished version should be a must-have, especially for overseas readers as it will be available in 18 languages.

While we're on the subject of browsers, it's worth mentioning that there are two OS/2 Warp browser projects under way and one text-mode browser available. The WarpZilla project is part of the effort to take the Netscape source and port it to other platforms. Back in January of this year, Netscape made the source code for Communicator freely available, whereupon several projects to port it to other platforms started up. Netscape set up a clearing house, called Mozilla after the codename for the original Netscape Navigator browser, and the Warp porting effort was called WarpZilla. This project is a voluntary effort, not connected in any way with the IBM Netscape Communicator 4.04. WarpZilla has not yet produced a real beta although an early version was posted on the internet. This was based on work which has since been discarded, as earlier in 1998 Mozilla decided to change to a new layout engine called

NGLayout (for New Generation). As a result, it looks like there'll be a delay before the next WarpZilla test code based on NGLayout appears. You can find news and pointers to the Warp material at www.mozilla.Zine.org/.

Opera, the other OS/2 browser under development [Fig 1], seems to have run into trouble with Open32, the Lotus/IBM technology that was used to port Lotus SmartSuite for Warp 4 from the 32-bit Windows version. We remember how many years it took for that product to arrive, so we can only hope that the Opera team manages to crack the problems quicker. You can track progress at www.operasoftware.com/alt_os.html, but if you really want to run a thin browser under OS/2 there's always the 16-bit Windows version. @Macarlo has instructions for using the Opera 3.5 beta for Windows in a Warp 4 Win-OS/2 session at www.geocities.com/SiliconValley/Horizon/5423/operabeta35.htm. The last word on browsers for the time being is that Lynx 2.8 for OS/2 is now available from the Hobbes archive. It should be in the <http://hobbes.nmsu.edu/pub/os2/apps/internet/www/browser/> directory. Lynx is a text mode browser — ideal for command-line users.



▲ Fig 1 @MACARLO EXPLAINS HOW TO RUN OPERA FOR 16-BIT WINDOWS IN A WIN-OS/2 SESSION

Readers' favourites

Readers' favourites

If, like me, you're old enough to remember XTree Gold, you'll want to follow up the suggestion from reader Holger Granholm to download ZTreeBold [Fig2], an OS/2 text mode program that mimics XTree Gold's way with files and directories. I hate to admit it, but when I graduated from DOS and Windows to OS/2 I continued to use XTree for housekeeping. It was only when I started playing with Windows 95 that we finally parted company because it (95) seemed to make XTree go crazy.

While we're talking about the weird stuff that Windows 95 does to FAT to make long filenames work, does anyone

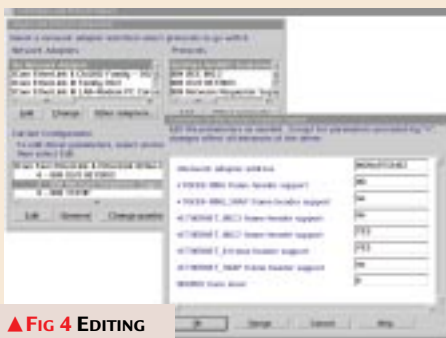
FIX PAK #8 ON THE COVER CD

Fix Pak #8 for Warp 4 didn't make it to last month's PCW cover-mounted CD because there were a few glitches in the first release and a potential problem with the installer. However, these were rapidly sorted and it is on this month's cover-mounted CD, so there should now be no problems. Well, almost none! After a slight contretemps with Fix Paks, reader Ian Park suggested that Fix Paks on the covermounted CD should be accompanied by a list of contra-indications. It's a fair point, but there are really only two contras to remember: please don't install a Fix Pak unless you really need to; and do read the README files — they have full information on how to install, what to be wary of, and how to back out of a Fix Pack if there's a problem. Having said that, please note that you have to install Fix Pak #32 or later in order to install the Java and Netscape Communicator 4.04 packages on Warp 3.

BITS AND PIECES

Here are some issues arising from reader problems, Java stuff and an update on an earlier featured utility.

➔ **NetWare connection failure.** One item I haven't noticed in a README is a reference to NetWare connections failing after installing NetWare client support with Warp. If the Warp NetWare client then fails to find a NetWare server at boot time, it throws up a REQ0815 error: "Program cannot get the connection ID". This problem invariably occurs



▲ FIG 4 EDITING THE MPTS SETTINGS OF THE NETWARE CLIENT FOR WARP

because the Warp client defaults to 802.3 Ethernet frames

whereas NetWare has defaulted to 802.2 frames since 1993. Here's how to fix this [Fig 4]:

1 Open an OS/2 Window and run MPTS. Select "Configure" from the Multi-Protocol Transport Services window. Now, with the "LAN Adapters and protocols" radio button checked in the Configure dialog window, again select "Configure".

2 With the "Adapter and Protocol Configuration" window open, move to the section headed "Current Configuration", highlight "IBM NetWare Requester Support" and select Edit.

3 Change the "yes" next to "*ETHERNET_802.3 frame header support" to a "no" and ensure that there's a "yes" next to "*ETHERNET_802.2 frame header support".

4 Select OK twice, then "Close", then "Exit" to get to the Update CONFIG.SYS window. Make sure that the Update box is ticked and then select Exit to make the change. Now reboot, and *voilà!*

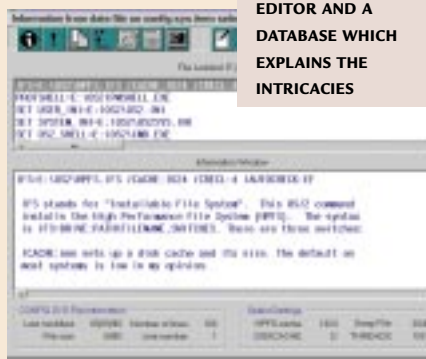
➔ **The -d option.** If you don't use the -d option to create sub-directories when decompressing the Java ZIP files provided on our cover-mounted CD,

you'll hit a "file not found" when you run the install program. This information is in the README file; but then, how many readers first extract the README from the ZIP? I know I don't. Doh!

➔ **Updating Warp.** When updating the Warp installation diskettes with new drivers (from WARPINST.EXE, say) it is sometimes necessary to delete other files in order to make space for the new drivers. If you do this you must also

REMark out the corresponding load line in the CONFIG.SYS file on Diskette 1 or else the install will come to a juddering halt. It's in the README. Frankly, my head hurts when I see these huge text files, but more often than not they contain the information you need to recover from problems.

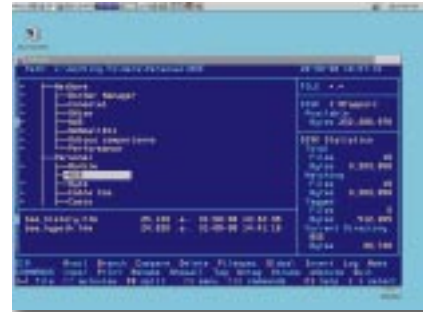
➔ **Dialog Enhancer.** Richard Castle has updated Dialog Enhancer and taken the opportunity to make it work with Netscape Communicator 4.04 for OS/2. The Netscape support was part of a beta when we heard about it,



▼ FIG 5 CONFIGINFO IS A CONFIG.SYS EDITOR AND A DATABASE WHICH EXPLAINS THE INTRICACIES

but should be finalised by now. Dialog Enhancer has added support for German and Spanish, more support for video cards, and there are now more programs supported. Find it at www-student.lboro.ac.uk/~mcrsc/ostrans.html.

➔ **Ace tool.** CONFIGINFO is a great tool [Fig 5] which helps you edit your CONFIG.SYS and explains what all the lines mean. It's a free utility, and you can get it from www.buntspecht.de/files/cfginfo6.zip.



▲ FIG 2 ZTREEBOLD IS A SHAREWARE FILE MANAGER WHICH TAKES OVER WHERE XTREE GOLD LEFT OFF

have hard information on the machinations of Windows 98 and FAT32? It's

becoming apparent to me that Windows 98 does more to the Boot drive than I had at first thought, but I'm not sure what. Anyone with the answer, please write. You can find ZTreeBold at www.bmtmicro.com/catalog/ztrebold.html.

The IBM bloke who said we could put VisualAge for Java 2.0 on our cover disc has gone all quiet so no news on this front. However, reader Jean-Yves Rouffiac has suggested Simplicity for Java, a 100 percent Pure Java development tool. A not-too-big trial download version can be found at www.datarepresentations.com/



▲ FIG 3 THE NETBEANS IDE WRITTEN IN 100 PERCENT PURE JAVA RUNS ON WARP AND MANY OTHER PLATFORMS

index.htm. Another 100 percent Pure Java IDE, NetBeans Developer [Fig 3], is offering a free beta for download. Look for it at www.netbeans.com/.

PCW CONTACTS

Terence Green can be contacted by post at the PCW editorial office (address p10) or email os2@pcw.co.uk



Warp on

Terence Green presents step-by-step instructions on how to **install Warp** from a hard disk.

Life is strange. You spend ages waiting for a new server OS and then three turn up together. Elsewhere in this issue [p126] you can read about NetWare 5.0 which has been shipping since September 1998, and Windows NT 5.0 which should ship before the millennium arrives. Aurora, the next version of Warp Server, is now in beta and due to ship in early 1999. Aurora is evidence that Warp is far from dead and, as this column has said many times before, where there's a server update the client cannot be far off. Obviously, a new Warp client wouldn't include server-specific items such as the Aurora Journalled File System (JFS) which quickly recovers after crashes (with the assistance of a transaction log) but support for new hardware, kernel updates

Aurora includes support for the Intelligent Input/Output Architecture Specification (I2O), a new I/O industry-standard interface for storage and network adaptors, and for symmetric multiprocessor systems with up to 64 Intel CPUs. Aurora also has systems management for servers and client desktops, centralised management of Windows NT 4.0 servers, Dynamic DNS, DHCP services, LDAP support, Virtual Private Networking and a Unix Network File System (NFS) redirector, as well as support for clients running OS/2, DOS, Mac, and all versions of Windows from 3.x to NT.

It's fascinating to see Aurora lining up alongside Novell NetWare 5.0 and Windows NT 5.0 in the 1999 timeframe, because all the features and attributes

listed above can also be found in the other two. It's easy to form the impression that the PC world is a series of wars (font wars, GUI wars, desktop OS wars *et al*) leading to one dominant product. Well, it just ain't so, because one size does not fit all and that is why firms looking for a year 2000-ready, high-availability, IP standards-based, Intel-based server platform

designed for heterogeneous networks are spoilt for choice.

Installing Warp

I am indebted to Trevor Hemsley for posting these instructions, to the [comp.os.os2.setup](#) newsgroup, on how to install Warp from a hard disk. Trevor notes that this information comes from IBM.

● **If you have** the CD-ROM version of OS/2 Warp and your CD-ROM drive is currently unsupported by OS/2; or, if you have DOS installed on your system and it

recognises your CD-ROM, you can use the following procedure:

➤ **Hard Drive to Hard Drive Installation**

1 First of all, start your system from DOS.

2 Make a temporary directory called TEMP; type MD TEMP. Press Enter.

3 Type in the code below (where X: is the CD-ROM drive and C: is a drive that contains enough disk space to place the images and OS/2):

```
XCOPY X:\os2image\*. * /S C:\TEMP
```

and then press Enter.

Note — size = 35 or 525 and X: is the CD-ROM drive letter.

4 To create the installation diskette and diskette 1, type the following and press Enter:

```
X: \makedsk
```

5 This creates an Installation Diskette, followed by Diskette 1. After the new DISK1 is created, press Ctrl+Break.

6 Edit the CONFIG.SYS on the new DISK1. Change:

```
SET OS2_SHELL=SYSINST2.EXE
to
SET OS2_SHELL=SYSINST2.EXE
C:\TEMP
```

Save and Exit the file.

7 You can start the installation if you have the following: Installation Diskette; DISK1 Diskette; Diskette images in the TEMP directory on the hard disk. Insert the OS/2 Installation Diskette in drive A: and restart your system.

8 Insert DISK1 when prompted and continue the installation.

DOIP and ISP

Allan (no surname supplied) wrote to ask which internet service providers (ISP) can be used with Warp. The answer is, just about all of them. You need to locate the Dial Other Internet Provider (DOIP) program in the Internet Programs (modem) folder and add an entry for the ISP. Most ISPs now offer PAP/CHAP PPP and dynamic IP addressing, which means that you need only enter the ISP



and the like will surely follow Aurora's release. Aurora's JFS raises the limit on file and partition size to two terabytes, and since we're talking server OS here, the high availability that JFS is designed to support will be complemented by server-mirroring software. This hooks two servers together so that if one crashes, the other takes over its workload. Aurora will also have a Logical Volume Manager which enables storage to be managed dynamically, growing partitions on the fly and creating logical drives that span several physical disks.

ANTI-VIRUS CORNUCOPIA

IBM and Symantec announced in May that Symantec would use IBM's virus control technology in Norton AntiVirus software. This includes a new Norton AntiVirus for OS/2 which IBM will be bundling with various products in place of IBM Anti-virus. You can find more details about Norton AntiVirus for OS/2 at www.symantec.com or www.av.ibm.com. The joint IBM/Symantec



➔ **Network Associates'** McAfee Virus-Scan for OS/2 is at www.nai.com. There are even some specialised front-ends. McAfee's virus scanner is a command-line utility so jazz it up with **PMFee Version 1.1** from Tom Steen at his web site at www1.tip.nl/~t207448/ or, if not there, at the OS/2 SuperSite www.os2ss.com/users/tjsteen/. Or, try Carsten Mueller's

◀ **NORTON ANTI-VIRUS FOR OS/2 WITH IBM PATENTED VIRUS IMMUNISATION IS ON THE WAY**

Virus Check Pro

1.0 which is a front-end that supports IBM AntiVirus, Sophos Sweep, Dr. Solomon's Anti-Virus-Toolkit, McAfee Virus-Scan, H&BEDV Antivir/2 and Norman Virus-Control and is available in the English, Dutch and German languages. Those with serious virus problems (universities

announcement generated quite a lot of discussion on Usenet and I was amazed to discover just how many OS/2 anti-virus products there were out there in addition to Symantec, IBM, and our very own Dr. Solly! Most of them offer demo or evaluation versions, too:



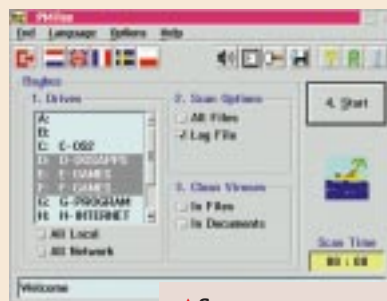
▲ **VIRUS CHECK PRO ENABLES MULTIPLE VIRUS SCANNERS TO BE USED AS ONE**

➔ Data

Fellows has F-Prot for OS/2 at www.f-prot.com.

➔ **Kaspersky Labs** is beta testing AVP for OS/2 at www.avp.ru/english/news/eval.html.

➔ **Norman Data Defense Systems** has Virus-Control for OS/2 at www.norman.com.



▲ **SHAREWARE MULTILINGUAL GRAPHICAL FRONT-END FOR MCAFEE VIRUS-SCAN**

and colleges for instance) like to use

at least two anti-virus scanners and Virus Check Pro allows you to do this easily with one click or via drag-and-drop. Although OS/2 is not especially known for virus attacks, any PC boot sector can fall victim to an infected floppy diskette which has been accidentally left in the drive at boot time. And of course, if you run either Word or Excel in a Windows session and exchange documents with other users, it is worth scanning for macro viruses.

➔ PMFee and Virus Check Pro are shareware and can also be had from BMT Micro at www.bmtmicro.com.



▲ **FIG1 SIMPLE ISP DIAL-UP TO PAP/CHAP PPP WITH DIAL OTHER INTERNET PROVIDER (DOIP)**

telephone number, your user name and password, the domain name (for example, isp.co.uk) and nameserver IP address (ask your ISP) and the modem details in the DOIP configuration notebook [Fig 1].

If you miss out anything, DOIP will ask you to enter it before saving the new configuration. If you leave out your login ID or password, you'll be prompted to enter them each time you initiate a call with DOIP.

BITS & PIECES

Timur Tabi's New User web page at www.os2ss.com/Information/NewUsers/ features a comprehensive set of links to OS/2 resources on the web.

Netscape Communicator 4.04 for OS/2 Warp should be released by the time you read this. You can download it free at http://service.boulder.ibm.com/asd-bin/doc/en_us/catalog.htm or wait for us to get it onto the PCW cover-mounted CD-ROM. It's a much smaller download than Navigator 2.02 because the Java support is no longer bundled and can be added separately.

Fix Pak #8 for Warp 4

We hope to be able to have the latest Fix Pak on next month's cover CD.

PCW CONTACTS

Terence Green can be contacted by post at the PCW editorial office (address p10) or email os2@pcw.co.uk



Hard times

It's cheap, and it should be easy to **get more mileage** from your hard-disk space. But beware of some common problems, says Terence Green.

Now that gigabytes-worth of hard-disk storage costs pennies, many people are discovering problems when they try to install Warp 4 and Warp 3 which shipped before disk sizes began to escalate. There are some common problems. For instance, adding a new drive and discovering that Warp doesn't like it, or adding a new ATAPI (IDE) CD-ROM drive, or attempting to install Warp 3 or Warp 4 onto a new, large drive [Fig 1].

Reader Colin George discovered the problem when he bought a new Quantum 6.4Gb drive for his PC, which dual-boots Windows 95 and Warp 3. Having formatted and partitioned the new drive under Windows 95, he discovered when booting into Warp that OS/2 FDISK reported that the partition data "may be corrupt". This is expected behaviour. Since Warp 3 pre-dates Windows 95, it has no way of understanding what Windows 95 does to

...the OS/2 FDISK reported that the partition data 'may be corrupt'

the FAT data in the drive partition tables in order to enable long filenames. The answer is to obtain and install the latest version of **IDEDASD.EXE** from IBM's Device Driver Repository at <ftp://service.boulder.ibm.com/ps/products/os2/os2ddpak/idedasd.exe>. This contains updated device drivers for EIDE drivers and IDE CD-ROM drives. Note that this update specifically addresses drives which attach to EIDE interfaces — it is not required for SCSI hard drives or devices. IDEDASD.EXE is only a small file (about 130Kb) but I've placed a copy of it anyway on our cover-mounted CD.

This version (which I downloaded in early August) supports hard disks up to and over 8Gb in size. Place it in a temporary directory and execute it to extract the files, then read the README.TXT file for instructions. You will need to install the files in **IDEDASD.EXE** if you plan to add a new multi-gigabyte hard drive — or a removable drive such as a CD-ROM or Zip drive — to the EIDE interface in your PC. You also require the files if you are planning to install Warp 3 or Warp 4 onto a new system which contains any of the aforementioned drives. Finally, this version of **IDEDASD.EXE** also updates some glitches in the files of the same name which were included in the Fix Paks on July's PCW cover disc, so you should install it if you applied either Fix Pak #35 for Warp 3 or Fix Pak #6 for Warp 4.

The readme.txt file in **IDEDASD.EXE** explains the various procedures in detail, but readers may still find the odd glitch preventing them from accessing their new large hard disks. If, having installed the files correctly, you still have a problem accessing your new drive, you may have a motherboard that does not fully support BusMaster DMA. Since the new device drivers set

busmastering on by default, try disabling it by editing the following line in **CONFIG.SYS**;
`base dev=ibm1s506.add /a:0 /!BM`
The "a" refers to the IDE channel number beginning with 0 (zero) for the primary channel. You can type **HELP IBM1S506.ADD** at an OS/2 command prompt to display the full set of help information for this device driver.

■ **A fair number of readers** say they would like to run dual Windows 95 or



▲ Fig 1 IBM IS PREPARING TO SHIP THE FIRST BETA OF WARP SERVER 5, CODENAMED 'AURORA', LATER THIS YEAR, WITH A SHIPPING DATE SET FOR EARLY 1999



▲ Fig 2 PARTITIONMAGIC IS BY FAR THE BEST WAY TO PARTITION AN EXISTING WINDOWS 95 OR WINDOWS 98 SYSTEM TO RUN WARP AS WELL

Windows 98 and Warp systems. The best way to do this is to use IBM Boot

Manager to switch between them at boot time. You need a partitioned hard disk with one partition for Boot Manager and another partition for Warp, in addition to the primary C: partition in which Windows 95/98 usually resides.

If the drive only has a single partition, setting it up to install Warp as well will entail deleting the Windows partition in order to create multiple partitions. You can do this manually by backing up all your data, deleting all partitions and re-partitioning. Or you can use PartitionMagic from PowerQuest [Fig 2] to do it on the fly. You should still back up all vital data, but at least you can prepare the drive from a graphical console without requiring a master's degree in PC drive partitioning.

Unless you are a drive partitioning expert, I recommend PartitionMagic because it will also help you to bypass the FAT32 problem. Warp cannot see partitions formatted with the FAT32 file system which was introduced with Windows 95 OSR2 and carried into Windows 98. In order to install Warp on a PC, it must have at least one partition formatted for FAT16. You don't have to keep the partition formatted FAT16, but Warp Installation won't work if it can't find either a virgin, unpartitioned, first physical drive or a FAT16 partition on that drive.

■ **Good news arrived** in August when the first beta of Netscape Communicator

ASSIGNING DRIVE LETTERS

Reader Esmond Poynton, having moved from Warp 3 to Windows 95 and now wishing to reinstate Warp, would like to partition: a 4.3Gb drive with Windows 98 on C; a Zip drive as D; a CD-ROM on E; and Warp on F:

Clearly, he wants the drive letters to remain the same in both systems, but Warp will not allow drive letters to be assigned to removable drives ahead of fixed drives. So, in practice, the drive letters will be assigned as follows:

➤ **C:** Windows 98 (fixed drive)

➤ **D:** Warp (fixed drive)
➤ **E:** ZIP drive
➤ **F:** CD-ROM drive

This holds true with a FAT-formatted Warp partition but if you select HPFS for Warp, Windows 98 will not see the Warp partition and the ZIP drive will become D: when booted into Windows 98, while the CD-ROM will become E:

The solution is to assign the required drive letters to the ZIP and CD-ROM drives in Windows 98. This can be done from Windows 98/Control Panel/System/Device Manager by highlighting the drive,

clicking on Properties and assigning the same letter to the drive as it has when booted into Warp.

It is also necessary to install Fix Pack #35 (or later) for Warp 3. FP35 adds the full support for removable drives which enables Warp to automatically assign drive letters to the ZIP drive. The same holds true for Fix Pak #6 and Warp 4. Both Fix Pak #35 and Fix Pak #6 can be found on PCW's July 1998 cover-mounted CD-ROM.

See page 10 of this issue for information on how to obtain back issues.

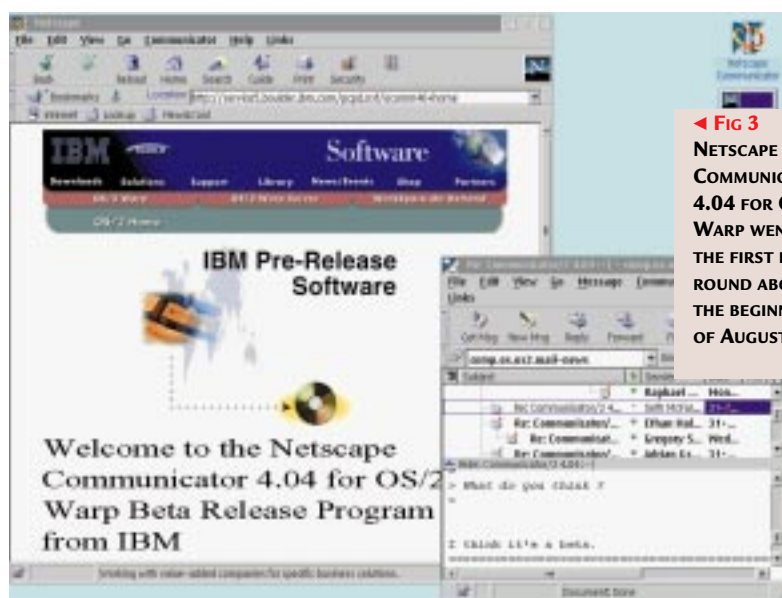
4.04 for OS/2 shipped [Fig 3]. I've had a chance to play with it and it looks pretty good. There's another round of beta testing to come which may not be out by the time you read this; but if not, it won't be long. It's modelled on the same code as the Windows-based Communicator

versions and has pretty much the same look-and-feel to it. You won't find the Netscape Communicator beta on our cover-mounted CD-ROM, as I've decided against including beta software for two reasons. First, given the long editorial lead times for this column, we could find ourselves publishing beta software around the time the shipping product appeared. And second, I have received only one reply in favour of providing betas on the PCW cover disc — so, sorry, Phil Harrison, but you've been outvoted.

Phil also suggested keeping major downloads, such as Fix Paks, on cover-mounted CD-ROMs for as long as they are current. This is a fine idea, but unfortunately the pressure for space on the PCW CD-ROM makes this impossible. You will just have to buy the magazine every month or, better still, subscribe [see p10].

PCW CONTACTS

Terence Green can be contacted by post via the PCW editorial office (address, p10) or email os2@pcw.co.uk



◀ **FIG 3**
NETSCAPE COMMUNICATOR 4.04 FOR OS/2 WARP WENT INTO THE FIRST BETA ROUND ABOUT THE BEGINNING OF AUGUST



Jumping into Java

Terence Green looks at Java possibilities for Warp wannabes. His handy tips along with the software given away free on our cover CD, means you can be Java'd up in no time at all.

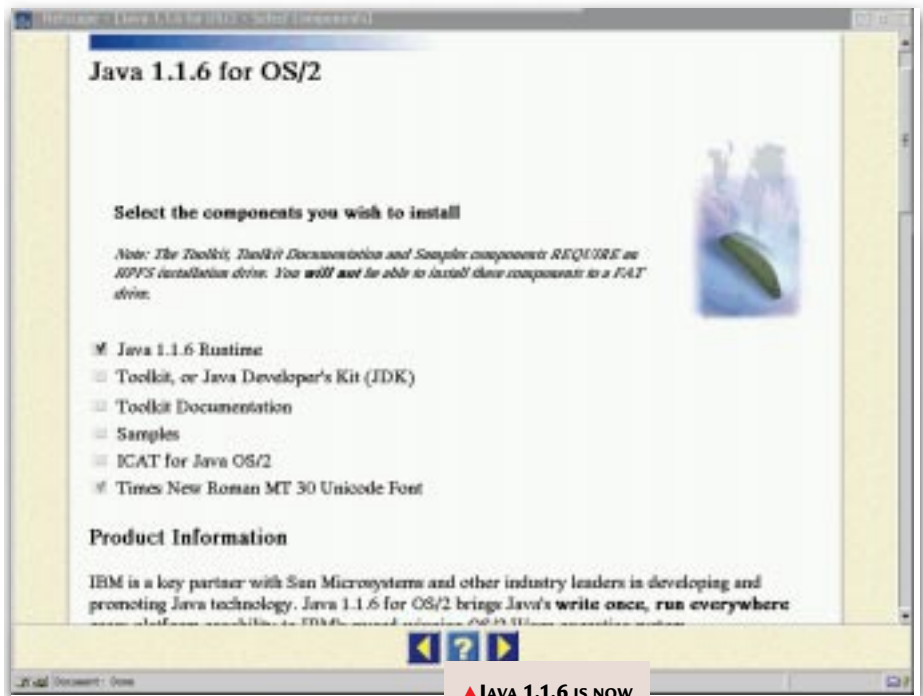
While responding to readers' letters complaining about IBM's marketing of Warp, it occurred to me that Warp users would be a lot worse off now if IBM hadn't decided to focus on its key OS/2 customers. Had IBM continued to go against Windows on the desktop, it's quite possible that we would now have even less choice. As it stands, we're guaranteed Fix Packs and the latest Java developments as they appear. It's a testament to that continuing support that we barely managed to get Fix Pack 6 and Java 1.1.4 on the PCW cover disc before they were overtaken by Fix Pack 7 and Java 1.1.6 (about which more later).

A word on Warp

Mike Hitchcock is not only dismayed by IBM's rejection of the SoHo and consumer PC market, but also doubtful of the benefits for home users in the Java and network computing direction that Warp is headed. I'm convinced that home users will benefit, but it may take a while to filter through. Some of the Java developments mentioned on these pages, particularly the PalmPilot/Warp connection but also the OS/2 Java FAQ sites, begin to show how it can be used to unite today's PCs with the handheld and consumer devices of tomorrow.

Java will also help reader Darren Hufford, who dislikes having to use Windows 95 at work and then having to convert to the older Windows 3.1 programs that run on his home OS/2 system.

The same program can run on both. Admittedly there are not yet that many shrinkwrap choices, but when there are,



▲ JAVA 1.1.6 IS NOW IN THREE REDUCED-SIZE PACKAGES FOR EASIER DOWNLOADS

Warp will be among the first to support them. Being able to run the same application on Warp and Windows would make my life a lot easier, too.

I'm writing this column from a friend's home in Cape Town on a Windows 95 system! When I set it up a year ago I would have preferred to have set it up as an OS/2 system because my friend's main applications are word processing and email; but I set it up as a Windows system for an important reason. When things went wrong, as they did because my friend is a complete computer novice, she had access to lots of people who could offer help. Had she been an OS/2 user it would have been down to me to maintain the system from 8,000 miles away.

Now, with Java emailers becoming available (and Lotus SmartSuite for Warp to take care of the word processing) it's looking a lot more possible to set up the Cape Town PC as a rock-solid Warp box. This would be a great improvement over the Windows system which, whenever it cannot dial out, suggests reconfiguring Windows 95. These misleading messages create havoc among novice users.

While I'm pleased that IBM took the

decision to focus on key Warp accounts,

because it has brought benefits for home users, there is a gaping hole in this argument which concerns individual Warp users in companies of all sizes. I receive many emails from readers who feel cut off because they have chosen to run Warp at work. They receive no support from their IT department and yet they regularly report better reliability from their computers than those of colleagues running Windows 95.

I can understand IBM taking the Warp spotlight away from consumers, but leaving all single-unit purchasers in the dark prevents individual Warp users in companies from being able to provide a practical demonstration of a solid alternative to Windows 95.

Java 1.1.6

On our PCW cover disc you'll find a copy of Java for OS/2 Warp. Java 1.1.6 is totally groovy. It supports Warp 3 and Warp Connect with FixPak 32 or later, Warp 4, Warp Server and Workspace On Demand, so there's a single codebase to support all versions of Warp. It works



A FRESH SET OF YEAR 2000-READY JAVA RUNTIMES FOR THE NETSCAPE FOR OS/2 BROWSER

with the latest Netscape 2.02 for OS/2 release and IBM has split off a runtime version for those who don't want the full developers' kit. It's Year 2000-ready, too.
Earlier Netscape 2.02 updates included a Java 1.0.2 runtime which made for big downloads and created problems for Warp users who added one of the later

IBM Java for OS/2 packages. This resulted in two Java installations in separate subdirectories and potential configuration problems. The 19th June update of Netscape 2.02 for OS/2 (which should be on our cover CD) now works with Java 1.1.6 and no longer needs to include its own Java runtime.
This will be good news for reader Jean-Yves

Rouffiac, who ended up with two Java installations and a pile of problems. He can now junk the previous installations using Selective Uninstall, or by deleting the subdirectories and removing all references to them from CONFIG.SYS, after which he can upgrade to Java 1.1.6.
The 1.1.6 download now comes in

three versions: runtime; runtime with Unicode font for Japanese, Korean and Chinese versions of Warp; and the 1.1.6 Development Kit which includes tools, samples and a debugger. The Runtime without Unicode, which you need for Netscape 2.02 releases dated 19th June or later and also for running Java applets and applications, is only about 8Mb. The separate Developer Kit is a 12Mb download and the Netscape 2.02 download size drops to around 5Mb.
We've previously mentioned the Year 2000 problem in respect of Fix Packs, and Java for OS/2 is only Year 2000-ready from 1.1.4 onwards, which means that previous Netscape 2.02 releases that shipped with Java 1.0.2 are not. You can bring Java and Netscape up to Year 2000 readiness by upgrading to Java 1.1.6 and the latest Netscape package.
One item you won't find on the cover disc for a while yet is VisualAge for Java 2.0. It's due for release in October, which means we can get it onto our cover disc for the January 1999 issue. I know it's a long delay, but we're assured that the 2.0 version is worth waiting for.

PCW CONTACTS

Terence Green can be contacted by post via the PCW editorial office (address, p10) or email os2@pcw.co.uk

BY THE WAY...

The following snippets were gleaned from WarpCast at www.warpcast.com/.
● If you want to know more about Java and Warp, have a look at the FAQ which Fernando Cassia has at <http://fc.home.ml.org/javainst.htm> and the screenshot gallery at <http://fc.home.ml.org/javinos2.htm>.
● If you have a PalmPilot or IBM WorkPad you might want to try out JPD (Java-Pilot-Desktop), a Java connection for the PalmPilot written by OS/2 people at www.castro-rauxel.netsurf.de/~arnd.grossmann/jpd/index.html.
● There's a new IDEEDASD.EXE for Warp 3 and Warp 4 which supports EIDE drives greater than 8.4Gb and fixes some problems in Fix Pak #35 and

#6. Find it at <http://service.software.ibm.com/os2ddpak/html/30ABBBF6ABD9D85F86256598006908FA.html>.
● Fortify at www.fortify.net/main.html has released a new free patch for Netscape for OS/2 to enable strong (128-bit) encryption as opposed to the iffy 40-bit stuff we are stuck with outside North America. Note that it's intended for the service level 8 version of Netscape, not the one on our PCW cover disc. Hopefully the situation will have changed by the time this appears in print and there'll be a patch from IBM for the latest level of Netscape, but do check the service level before installing the patch. If you open the Help menu and select "About



▲ UPDATED SUPPORT FOR THOSE EVER-GROWING IDE DRIVES, AND THIS ONE INCLUDES DOCS FOR REMOVABLE DRIVES

Netscape" the service level shows up in the title bar of the browser window.



Florida keys

At its annual shindig in Florida, IBM revealed its plans for OS/2, including "Aurora", the new Warp Server. Our man in the Sunshine State, Terence Green, brings you up to date.

At the annual IBM technical bash in Florida, in May, the plans for OS/2 going forward were revealed. First off, there are new updates to the systems management and backup/recovery software for Warp Server, which can be found on Software Choice at www.software.ibm.com/os2warp.

Early in 1999, IBM expects to ship the next release of Warp Server, codenamed Aurora, with a high-performance Journaling File System (JFS). Simply, a JFS has fault tolerance, as it keeps a record of changes enabling it to roll back to a known good state in the event of a foul-up. JFS fault tolerance for Warp Server will be complemented by server clustering support, an integrated web server and Java, Year 2000 and Euro currency support. It will have a new name in order to lose the poor image that unfairly dogs OS/2.

Whatever it's called, next year's release of Warp Server will go up against Windows NT 5.0 and NetWare 5.0 as IBM's Intel-based "middle-tier" server. IBM Aurora will support Java for the same reason as Novell NetWare 5.0. Middle-tier servers bond information systems together for electronic business: Java is the only true cross-platform glue in town and it's only going to get better.

Where do you want to go tomorrow?

People sometimes think that IBM's big investment in Windows NT servers means that OS/2 is dead and Java is a distraction, but Aurora says otherwise. As far as Java is concerned, Microsoft is aggressively Windows-only at present but it will eventually realise that cross-platform Java is an opportunity rather than a threat, just as it



did with the net. IBM's Windows NT servers address people's aspirations today. Aurora looks to where they want to go tomorrow.

Supply On-Demand

The other leg of IBM's Warp-based server strategy is WorkSpace On-Demand, the transitional thin-client server for legacy applications which also supports Java. At the end of this year, IBM will ship the next release with improved administration and support for a wider range of hardware. There may also be a hint of Citrix in the mixture to support those Win32 apps.

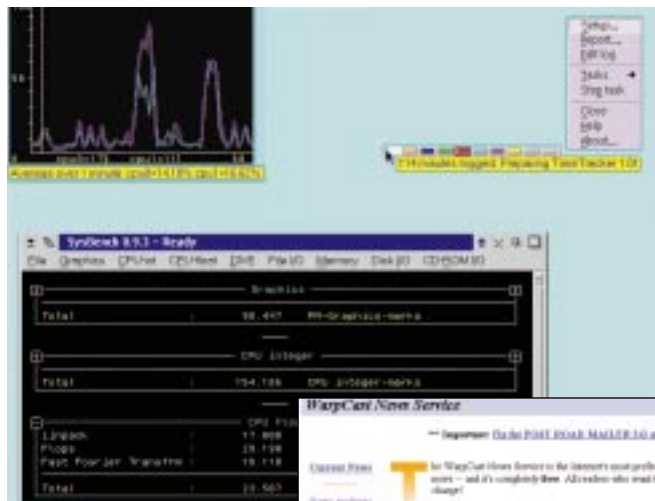
Not much was said in Florida about the Warp client but the situation remains as previously reported in this column. The future of Warp is in network computing with Java and that's going to keep the Warp client in the frame for a long time yet. WorkSpace On-Demand relies on Warp at the client end and it's inconceivable that IBM will ship Aurora in 1999 without a Warp client, purely because it has invested heavily

in the Java engine on Warp.

Another obvious sign of IBM's continuing support for the Warp client is the steady stream of updates and Fix Packs. OS/2 even features in future network clients from IBM. Core developers from the OS/2 team at Austin are now at work on the JavaOS for Business (a JavaOS optimised for Intel processors). The OS/2 client is being transformed into a network computing client but in such a way that no-one who uses it today should fear being cut off.

UK OS/2 user group

A number of UK OS/2 users are in the process of starting up an OS/2 user group. If you would like to be involved, please email Mike Kingsnorth at kingsno@ibm.net or have a look at the information site at www.denzil71.demon.co.uk/os2ug.html. You should also be able to find news of the UK OS/2 User Group at the WarpCast site www.warpcast.com.



Left (Fig 1) A selection of OS/2 Warp utilities: CPU Monitor, Sysbench, and Time Tracker
Below WarpCast OS/2 news on the hour

REXX in space

Despite having used OS/2 for years, I've managed to stay away from the REXX batch programming language. But people keep asking me when I'm going to do something on REXX, so I'm indebted to Brian Plester who has sent me a program he created to teach himself REXX. It's called SPACE.COM and you'll find it on our PCW cover CD in the HandsOn\OS2 sub-directory. The program catalogues disk space usage.

We also have three programs from Trevor Hemsley. If you've ever been into the OS/2 newsgroups (comp.os.os2.*) you'll recognise Trevor as a source of useful information on OS/2. Trevor wrote the following three programs: Sysbench 0.9.4c, an OS/2 benchmarking tool; CPU Monitor 1.11, which graphs CPU usage; and PM TimeTracker 1.10 which... well, you guess!

You can compare Sysbench results at <http://warped.cswnet.com/Sysbench> and if you follow the "Other apps" link at the bottom of that page there's some detail on the CPU Monitor and PM Time Tracker (also see Fig 1).

Applying Fix Packs

Some new users of OS/2 Warp have had difficulty with the Fix Pack instructions. Taking our August issue's Warp 3 PCW CD with Fix Pack #35 as the example, the files are stored in a special compressed disk format and named *.?dk where ? = 1 to J. These files need to be decompressed with DIUNPACK from FASTKICK.ZIP. You will need 50Mb free space plus another 10-15Mb or so for an archive directory, which needn't be on the same drive.



Open an OS/2 command window, create a temporary directory and, from the command line, copy XR_W035.?DK files from the CD to the temporary directory. Extract files from FASTKICK.ZIP to the same directory. Run DIUNPACK XR_W035.1DK to decompress the first compressed fileset.

Do the same for XR_W035.2DK to .XR_W035.JDK in turn. If you press the up arrow at the command prompt it will fill in the last command, and you can just back arrow and change the identifier from 1 to 2 though J rather than having to type the filename each time. When you finish, four sub-directories of the temporary directory will have been created. Now run FIX.COM (it was extracted from FASTKICK.ZIP) at the command prompt in the temporary sub-directory. A series of screens appears. One will ask for an archive directory. You'll need to enter a directory name here. Do read the README.1ST file for the details.

John Lewis wrote in to say that there's an even easier route. He used SimplyFix to install it direct from the CD. The version he used was SFix3.zip, a beta version he found on the OS/2 SuperSite.

PCW Contact

Terence Green can be contacted c/o the PCW editorial office (address, p10) or via email at os2@pcw.co.uk.



Skinny dipping

Running Warp 4 on a thin little notebook, and Intel's Lean PC and JavaOS for Business: Terence Green lays bare the facts. And, how Calmira can make Warp turn the other cheek to Windows.

Hopefully the Warp Fix Paks and Java JDKs (PCW, June) have been of use to readers. Now that we have IBM's permission to place Fix Paks on our cover-mounted CD, we'll continue to do so.

The process is not without its problems, though. If you heard that Warp 3 Fix Pak #35 had been withdrawn, be assured that the version which appeared on last month's CD-ROM is the official, re-released, "fixed" Fix Pak — but it was a close-run thing.

Raiders of the faulty driver

Days before the CD was to be mastered, IBM withdrew Fix Pak #35 to replace a faulty SCSI RAID driver. Since Warp 3 is still the base OS for Warp Server, the RAID fix needed to be made; and it was fortunate that the replacement appeared in time to go on the cover, because this column has to be written and completed some weeks before the CD is cut. Thanks are due to reader Colin Haynes who alerted me to the Fix Pak #35 withdrawal.

We had hoped to include IBM VisualAge for Java:Entry 1.0 on the cover disc, with the Warp 3 Fix Pak. But days before we were ready to go, IBM told us that it was about to release version 2.0 so we're hoping to include that on next month's CD-ROM.

IBM has also offered us the beta of JDK 1.1.6, but I'm not so sure this is a good idea. Should we include betas or wait for the real thing? Let me know what you think. Also, if there are other big multi-megabyte downloads you would like to see on the cover-mounted CD, drop me a line.

Strut your funky stuff

Following up the discussion of Warp performance on older hardware, a reader,

An OS/2 free-for-all

If you're looking for general OS/2 shareware, do take a look at the OS/2 Must-Have Utilities web site at www.musthave.com or the European FTP mirror site at ftp.ia.amu.edu.pl/pub/os2/musthave.

The OS/2 SuperSite (pictured, below) at www.os2ss.com is also worth a look, and you can find an up-to-date list of OS/2 fixes with links at the OS/2 Master Update list www.os2ss.com/masterupdate/masterupdate.html.



Super-doooper: the OS/2 SuperSite is a central repository for news, files, links and OS/2 software vendors

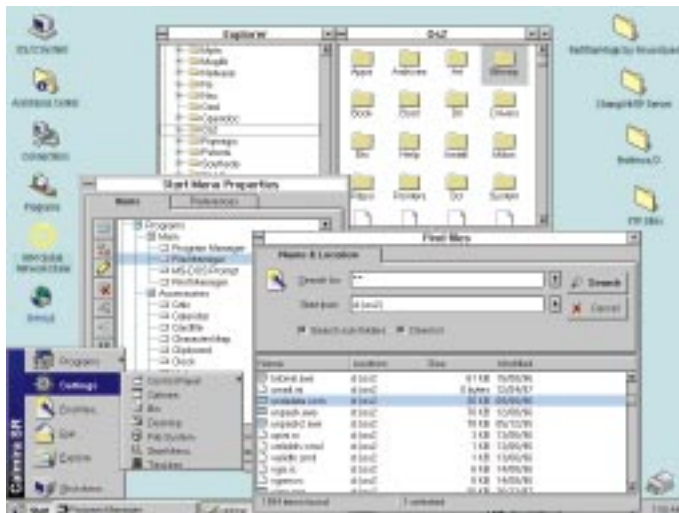
Erkki, wrote about buying a second-hand ThinkPad with a 500Mb hard disk and CD-ROM drive. As a 486/8Mb system it's a bit light for Warp 4 but it runs Warp Connect with Lotus, and Erkki, who plans to do some fresh-air writing, has "a funky machine to work with during the summer!"

The tale is a useful reminder that computing doesn't have to be about the latest processor and the greatest amount of

memory. I've noticed lots of really cheap 486 and even early Pentium notebooks being sold off lately, and I'm tempted to get myself a lean machine for writing, too.

Lean on me

Talking of "lean computing", there was an interesting announcement by IBM and Intel at the end of April. During 1998 they will co-operate on a version of the JavaOS for



Spice up your life with the Windows 95 look-and-feel, with the assistance of Calmira

available which replaces some files on Diskette 1 of the Install set, but I couldn't find the actual Update files anywhere. From

Business to run on Intel's Lean PC. IBM will also produce an Intel-based version of its Network Computer.

Like WorkSpace On Demand, the JavaOS for Business is aimed at managed PCs in company networks. But where WorkSpace On Demand supports an OS/2-based transition from client/server to network computing, the JavaOS for Business is pure Java.

When Intel first announced the Lean PC, in December 1997, IBM said then that it would support it with WorkSpace On Demand. So, this latest agreement can be seen as an extension of Intel's growing interest in network computing and Java.

It also implies a logical roadmap from OS/2 through WorkSpace to Java which, conversely, is good news for OS/2 because having a roadmap relieves doubts of heading towards a dead end. Having a roadmap endorsed by Intel looks even better.

Warpability compatibility

Yousri Shehata writes from Egypt with a query about Warp 3 compatibility with the IBM Aptiva. Yousri's copy of Warp 3 included a flyer warning of special procedures for the Aptiva. Finding information on specific hardware can be tricky, but there are a couple of places to look on IBM's web sites. I searched on www.ibm.com for "Aptiva" and found the hardware support page which led me to a search page at www3.pc.ibm.com/support?page=search where I could search for OS/2 Warp information.

Working at it from the other direction, I came to the Warp software pages and another search page at <http://service5.boulder.ibm.com/pspsdocs.nsf/>. Apparently there's an Aptiva update

the information I did manage to find, it seems the update not only updates Diskette 1, but also helps to set up the Aptiva-specific files that ship with the Windows 3.1 software pre-installed on Aptivas. In any event, Yousri had managed to install Warp 3 before writing so the updated Diskette 1 seemingly isn't vital.

The information also explained how to set up the Aptiva's Rapid Resume feature with OS/2, but Yousri also has a problem with the hard disk being accessed every few minutes so I'm not sure I found the full story on Warp 3 and the Aptiva. If any readers have firm information on the subject, please write to me here at PCW.

The two faces of Calmira

Paul Bunyan pointed me in the direction of an odd little application called Calmira, featured in last month's Hands On Windows 3.1 column, which gives the Windows 3.1 operating system a Windows 95 interface. Well, it also runs under Warp. Paul says he has used it under Warp 3 and Warp 4 in full-screen Windows. My screenshot (above) doesn't really do it justice, but it was sort of weird to see what appeared to be the Windows 95 Start bar where WarpCenter should have been.

The program is authored in the UK by Li-Hsin Huang. It is free software, published under the GNU General Public Licence. It isn't really my cup of tea, but if you are interested, look for it at www.tribbles.demon.co.uk/calmira/calmira.htm.

PCW Contact

Terence Green can be contacted by post via the PCW editorial office (address, p10) or by email at os2@pcw.co.uk.



Fixes, updates, Warp and all

Terence Green has a fix for everything this month: fixes for Netscape, updates for Java, Epson drivers, support for TWAIN drives and more. It's a one-stop shop for all Warp customers.

Kicking off, some additional information regarding Warp 4 FixPak #6, Netscape for OS/2 and the OS/2 Java 1.1.4 kit from last month's cover CD.

The Netscape version is the Level 7 update which fixes problems identified in earlier 1998 updates. The secret way to identify Netscape for OS/2 versions is the NETSCAPE.PKG file which can only be seen after you extract the files from the package. Doh!

I didn't include any of the updates for Java 1.1.4 on the cover CD. This started off as an omission on my part, but I've since been advised it was a smart move. Smaller fixes appear regularly, but as the cover CD will always be a few months behind due to publishing schedules, it is best to get updates direct from IBM Hursley at

ftp.hursley.ibm.com/pub/java/fixes/os2/ or via the Hursley Java web pages.

This month's cover CD features Warp 3 FixPak #35. Please read the FixPak instructions in the various readme files carefully before plunging in. If you have a Cyrix 6x86-class CPU, *do not* install FixPak #35 as lockups have been reported. At the time of writing the situation is unclear and other Cyrix CPUs may be affected. Check online sources for up-to-date information.

Communicate and fortify

Coming back to Netscape, IBM says Communicator for OS/2 will be ready in October as a free download from IBM Software Choice. I found this information at the OS/2 WARP FM site at www.software.ibm.com/os/warp/warpfm.

WarpFM also says Fortify for Netscape, version 1.2.1 for OS/2, is now available. I've been using the Windows NT version of this Australian 128-bit encryption package with no untoward results. It enables the strong encryption that is disabled in versions of Netscape downloaded outside of North America. Visit the Fortify web site at www.fortify.net/ for more details.

WarpFM also says it is time to upgrade to Warp 4, since OS/2 version 2.11 and earlier will not be certified for Y2K compliance. Warp3 can

be made Y2K compliant with FixPak #32 and above, Warp 4 with FP #5 or higher.

Hard times

Gordon Gay wrote with a problem affecting a 4.3Gb SCSI hard disk that returned odd information on the size of partitions under Win-OS/2. I couldn't be sure of the exact problem because he fixed it by downsizing the partition with PartitionMagic.

Two issues arise. One is that PartitionMagic is an absolute beauty. The other is that post-FixPak #6 there were a number of comments on the OS/2 newsgroups about Adaptec SCSI adaptors.

Adaptec adapters can enable sector translation for drives over 1Gb. They do this by default. Since FixPak6 switches this on, if your adapter has translation set off, a problem could arise.

Check by pressing CTRL-A when the Adaptec BIOS message appears at boot time. Please *do not* change this BIOS setting unless you have a current backup and are prepared to FDISK and reformat your drive.

The quickest way to update support for large E-IDE or SCSI drives or removable drives is to download a fix from IBM Device Driver Online at service.software.ibm.com/os2ddpak/html/. Alternatively, install FixPak #6 for Warp 4 or #35 for Warp 3. The new removable drive support covers LS-120 and ZIP ATAPI drives, and also EIDE hard drives greater than 4.3Gb. A fix for drives larger than 8Mb which didn't make it into the FixPaks should be on the Device Driver Online site by the time you read this.

John Buckley writes to say that he considered a Zip Plus drive but decided to go for a Syquest drive. He chose the EzFlyer 230Mb because it is more than double the size of a Zip Plus for £30 less, access time is

Easter eggs and global news

Erkki from Finland has finally discovered the Warp 4 Easter Egg. Search for AAAAA.EXE and run it to see a scrolling list of developers with a background appropriate to Texas where the OS/2 team is now based. AAAAA.EXE works in Warp 3 too.

Stephen Brereton writes to say he won a copy of OS2 Warp version 3 (3.5 disc version). I'll pass Stephen the email address of the first reader to send me an email requesting it.

The Global English version of Lotus SmartSuite for OS/2 Warp 4 started shipping Thursday, 26th March. The German, Global French and Danish editions follow mid-April, and Global Spanish, Brazilian Portuguese, Italian and Dutch editions in June. The Release Notes are available from the Downloads page of the SmartSuite for OS/2 Warp 4 web site at

www.lotus.com/smartsuiteos2.





Above Beautify Warp 4 with Dialog Enhancer from www-student.lboro.ac.uk/~mcrsc/ostrans.html

Left Fortify Netscape for OS/2 with 128-bit strong encryption from www.fortify.net

needs a PC with BIOS support for bi-directional or Enhanced Capabilities (ECP) printing.

as good if not better for the parallel port version, and "they are quite clear on the web that they *do* support OS/2".

Drivers on site

John McLeod searched the Epson Germany site in vain for the Epson Stylus 600 driver mentioned in a previous column. So did I, until I discovered that Epson Germany has put it up on the LEO site at www.leo.org/pub/comp/os/os2/leo/drivers/printer/epson1011.zip. The description says: "10 Feb 98, 4893759 bytes; Epson (color) OS/2 printer driver". And the LEO site is very neat because you can browse to the files and read the readme online to see if it meets your needs.

Alternatively, IBM has a new OMNI driver at Device Driver Online which is said to handle text well and colour passably well at lower resolutions but not at 720 x 720. And there is a new parallel port device driver, PAR1284.SYS, at Device Driver Online too. It

John is also looking for scanner support. BMT Micro has a CFM TWAIN driver pack. Check www.bmtmicro.com for a list of supported scanners and a demo download. The CFM TWAIN driver supports SCSI scanner adapter boards and ASPI-compatible SCSI host adapters. It can be ordered online, cost \$50.

Richard Castle, of Loughborough University, wrote to tell us about his Dialog Enhancer program for Warp 4.0. Have a look at the screenshot above to see how it improves many of the dialog boxes. More information at www-student.lboro.ac.uk/~mcrsc/ostrans.html.

PCW Contact

Terence Green can be contacted by post via the usual PCW address (p10) or by email at os2@pcw.co.uk